

Draft, June 10, 2016

Date: 6/10/2016

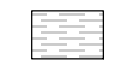
GROWTH CENTRE Hants Border LAND USE BYLAW

Schedule 10

- C3 - Commercial Mixed Residential
- R1 - Residential Single Unit
- R2 - Residential One and Two Unit
- R3 - Residential Mixed Density
- R4 - Residential Medium Density
- R5 - Comprehensive Neighbourhood Development

Approved On:

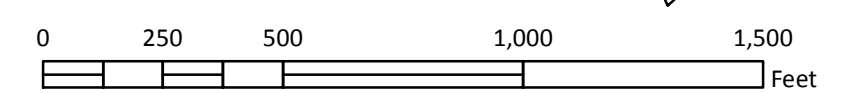
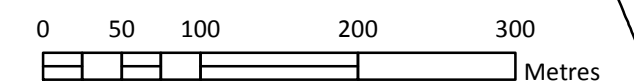
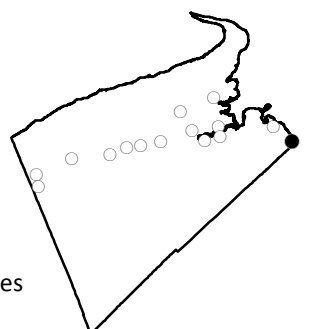
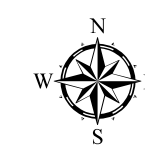
Amended To:

-  Growth Centre
-  Rural Area
-  Zone Boundary
-  Development Agreement
-  ESA Overlay

Avon
River

Kings County
Hants County

1:4,800



This map is a graphical representation of property boundaries and Municipal boundaries. It is not a survey and is not intended to be used to calculate exact dimensions or area.

Source: Property Records Database (2016) and Topographic Database (2008); NS Geomatics Centre Zoning, Roads Database; Municipality of Kings (2016)