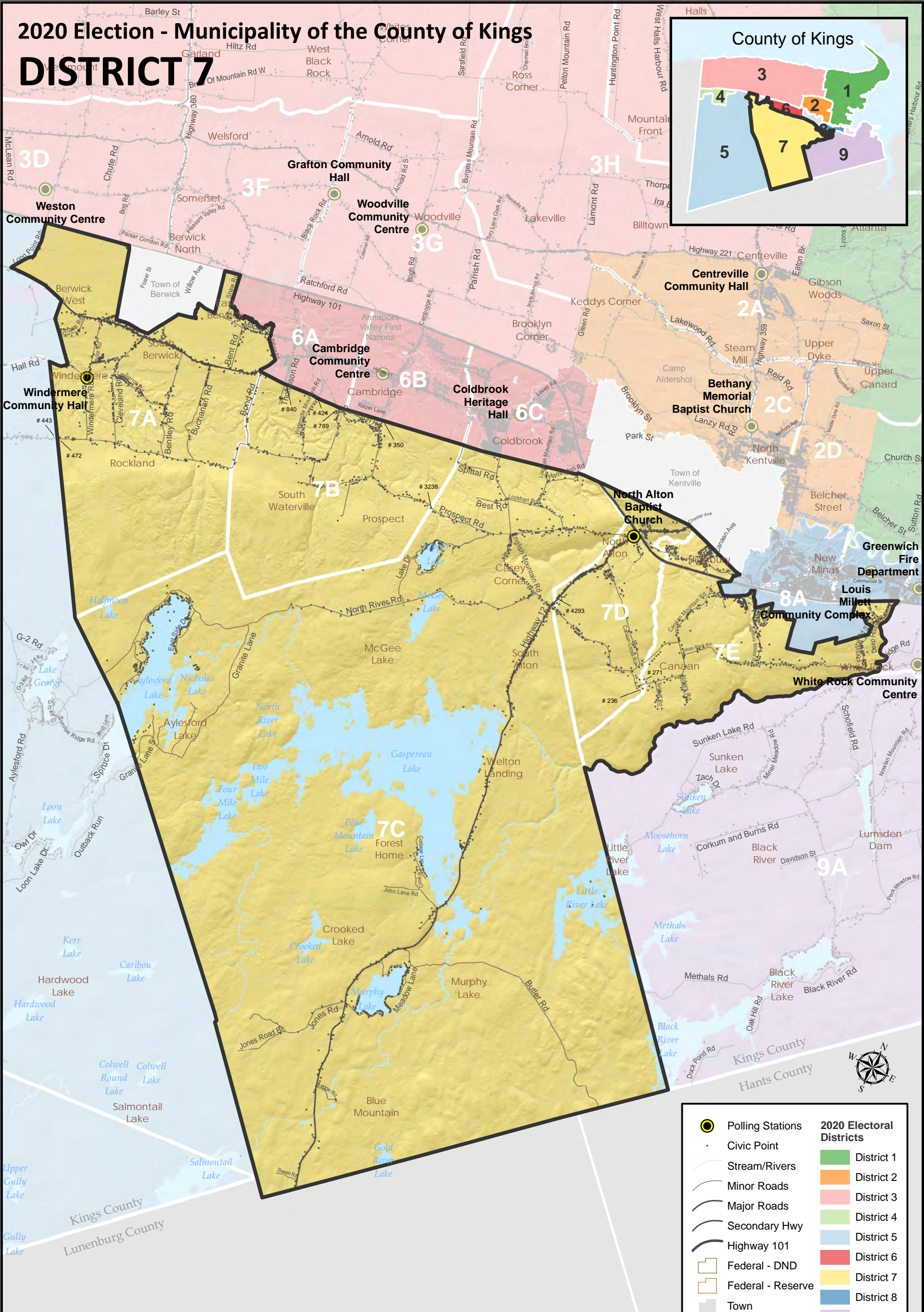
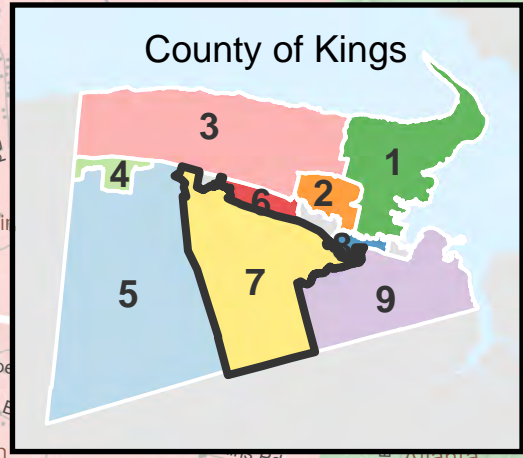


2020 Election - Municipality of the County of Kings

DISTRICT 7



ELECTION DAY POLLING LOCATIONS		
October 17th, 2020 - 8:00 am - 7:00 pm		
7A	WINDERMERE COMMUNITY HALL	402 Windermere Rd, Windermere
7B	CAMBRIDGE COMMUNITY CENTRE	5961 Highway 1, Cambridge
7C	NORTH ALTON BAPTIST CHURCH	4924 Highway 12, Kentville
7D	NORTH ALTON BAPTIST CHURCH	4924 Highway 12, Kentville
7E	NORTH ALTON BAPTIST CHURCH	4924 Highway 12, Kentville

- Polling Stations
- Civic Point
- Stream/Rivers
- Minor Roads
- Major Roads
- Secondary Hwy
- Highway 101
- Federal - DND
- Federal - Reserve
- Town

2020 Electoral Districts

- District 1
- District 2
- District 3
- District 4
- District 5
- District 6
- District 7
- District 8
- District 9

0 0.5 1 2 3 4
Kilometers

This map was created by the County of Kings for the 2020 Election. It is a graphical representation and is not intended for navigational purposes. Data on this map comes from various sources. Road data comes from the Nova Scotia Road Network dataset courtesy of the Nova Scotia Geomatics Centre (NSGC). Waterbodies and watercourses are part of the Nova Scotia Topographic Database (NSTDB). Electoral Districts courtesy of Elections NS. Civics data, polling division and stations maintained by MOK.
Created June 2020.