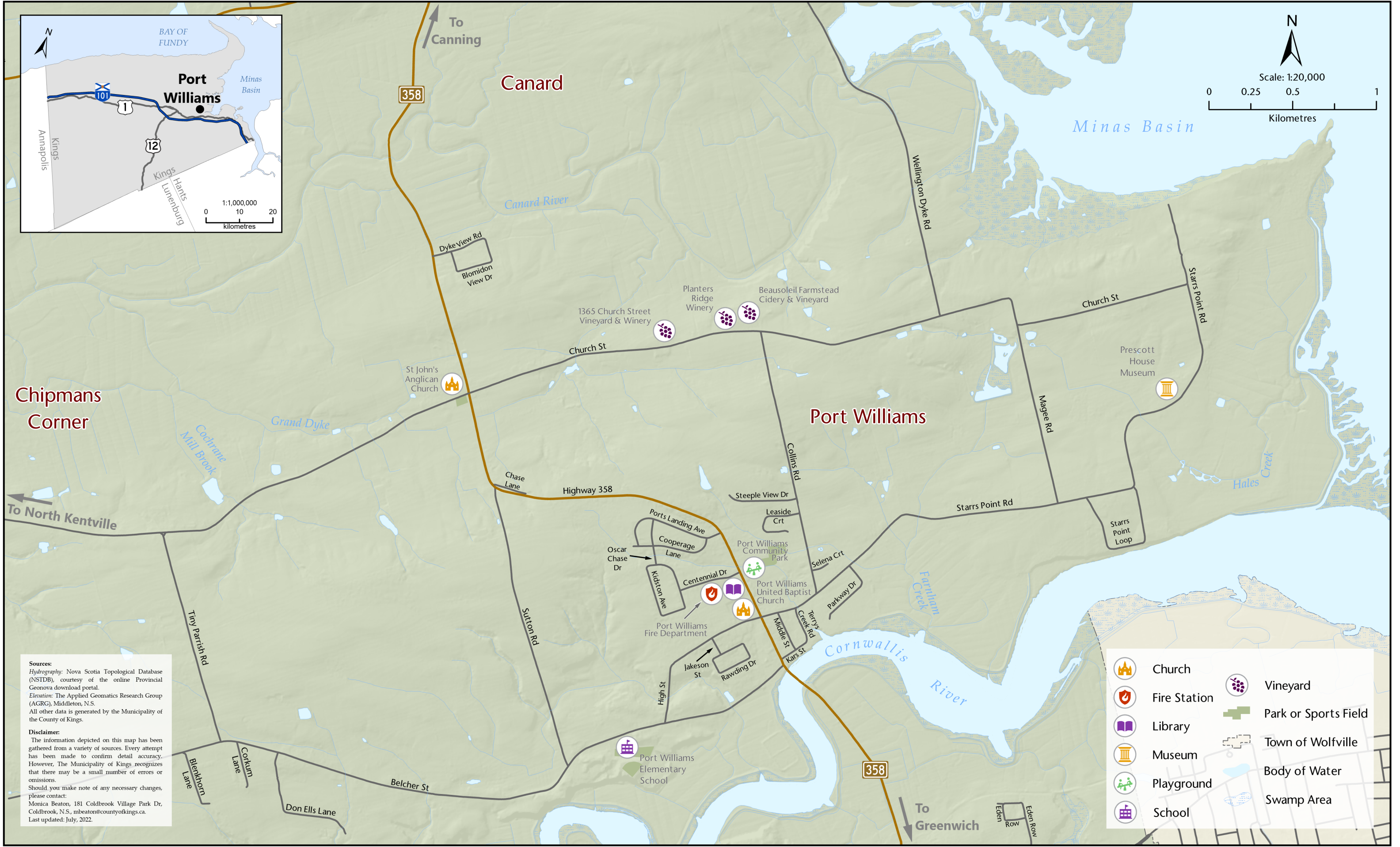


Port Williams Street Map



Chipmans
Corner

Canard

Port Williams

Sources:
Hydrography: Nova Scotia Topological Database (NSTDB), courtesy of the online Provincial Geonova download portal.
Elevation: The Applied Geomatics Research Group (AGRG), Middleton, N.S.
All other data is generated by the Municipality of the County of Kings.

Disclaimer:
The information depicted on this map has been gathered from a variety of sources. Every attempt has been made to confirm detail accuracy. However, The Municipality of Kings recognizes that there may be a small number of errors or omissions.
Should you make note of any necessary changes, please contact:
Monica Beaton, 181 Coldbrook Village Park Dr, Coldbrook, N.S., mbeaton@countyofkings.ca.
Last updated: July, 2022.

 Church

 Fire Station

 Library

 Museum

 Playground

 School

 Vineyard

 Park or Sports Field

 Town of Wolfville

 Body of Water

 Swamp Area